

Part One - Building upon the Canadian Digital Data Mosaic

Creating a National Student Data Exchange Network

ARUCC Groningen and Student Mobility Steering Group
2018

June ARUCC and PCCAT Conference



Groningen
Declaration

Agenda

Introductions

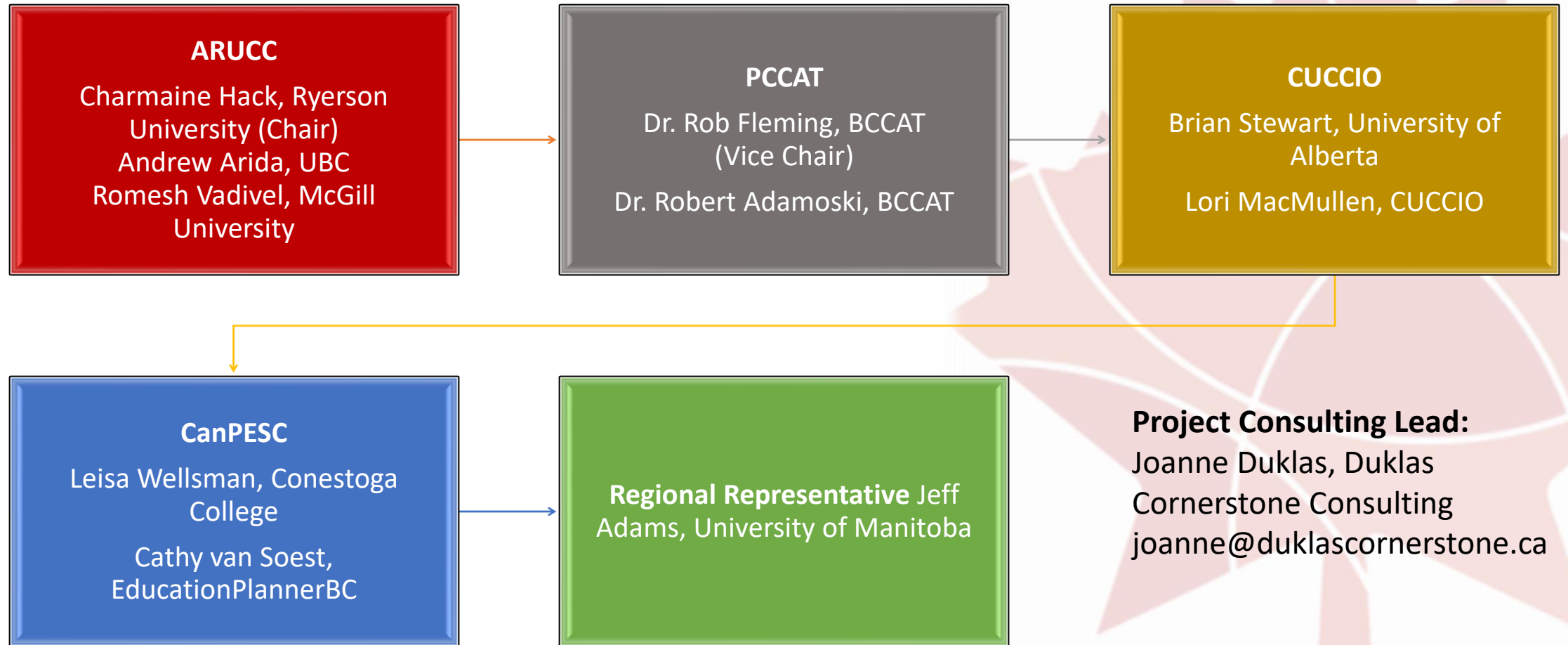
Creating a National Node

Project Status Update

Next Steps

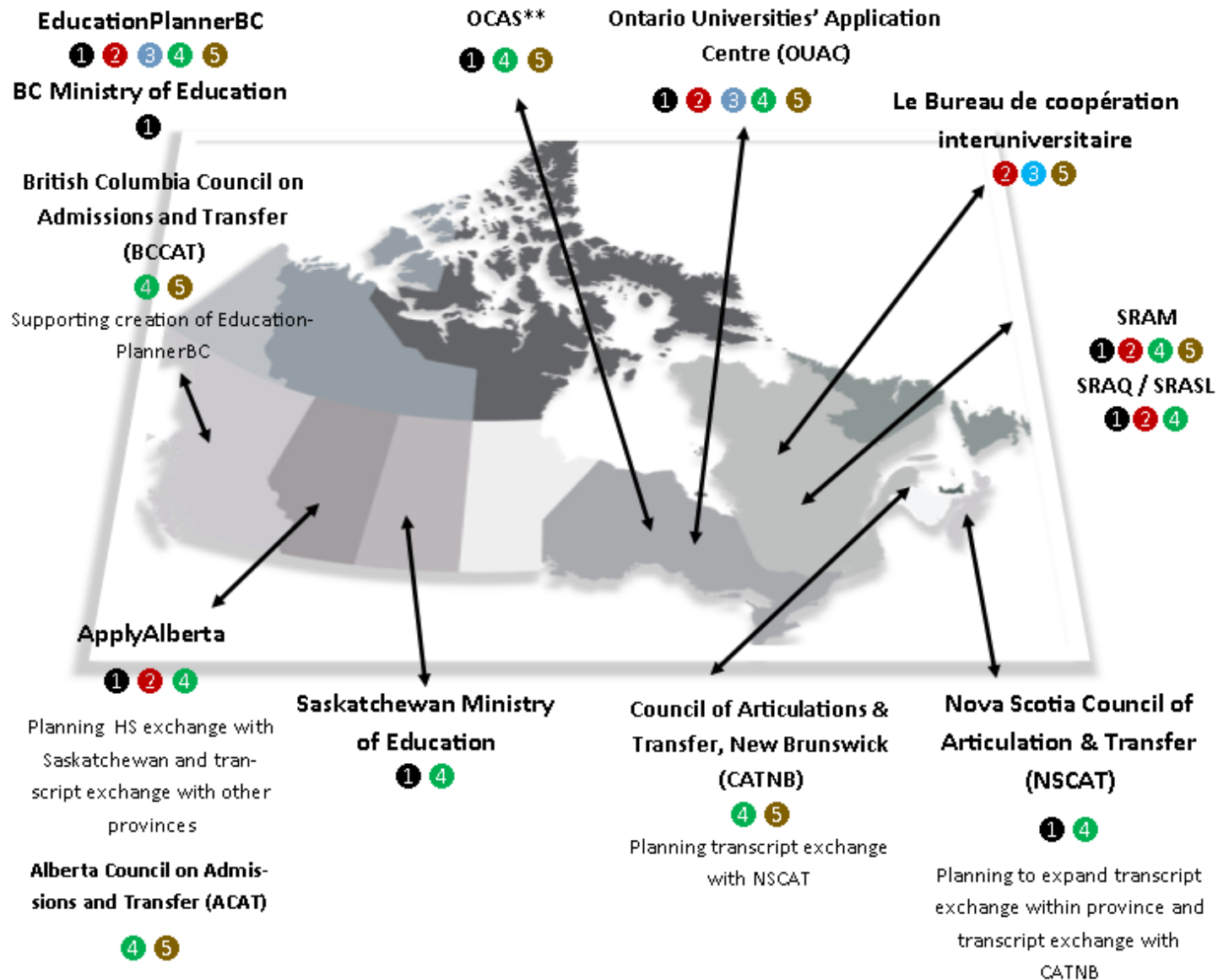
Discussion/Questions

Steering Committee



Possibilities & Problems to Solve

Internal Provincial Strengths



① Data exchange of high school data with post-secondary institutions to support admissions within province

② Data exchange between post-secondary institutions to support intra-provincial exchange

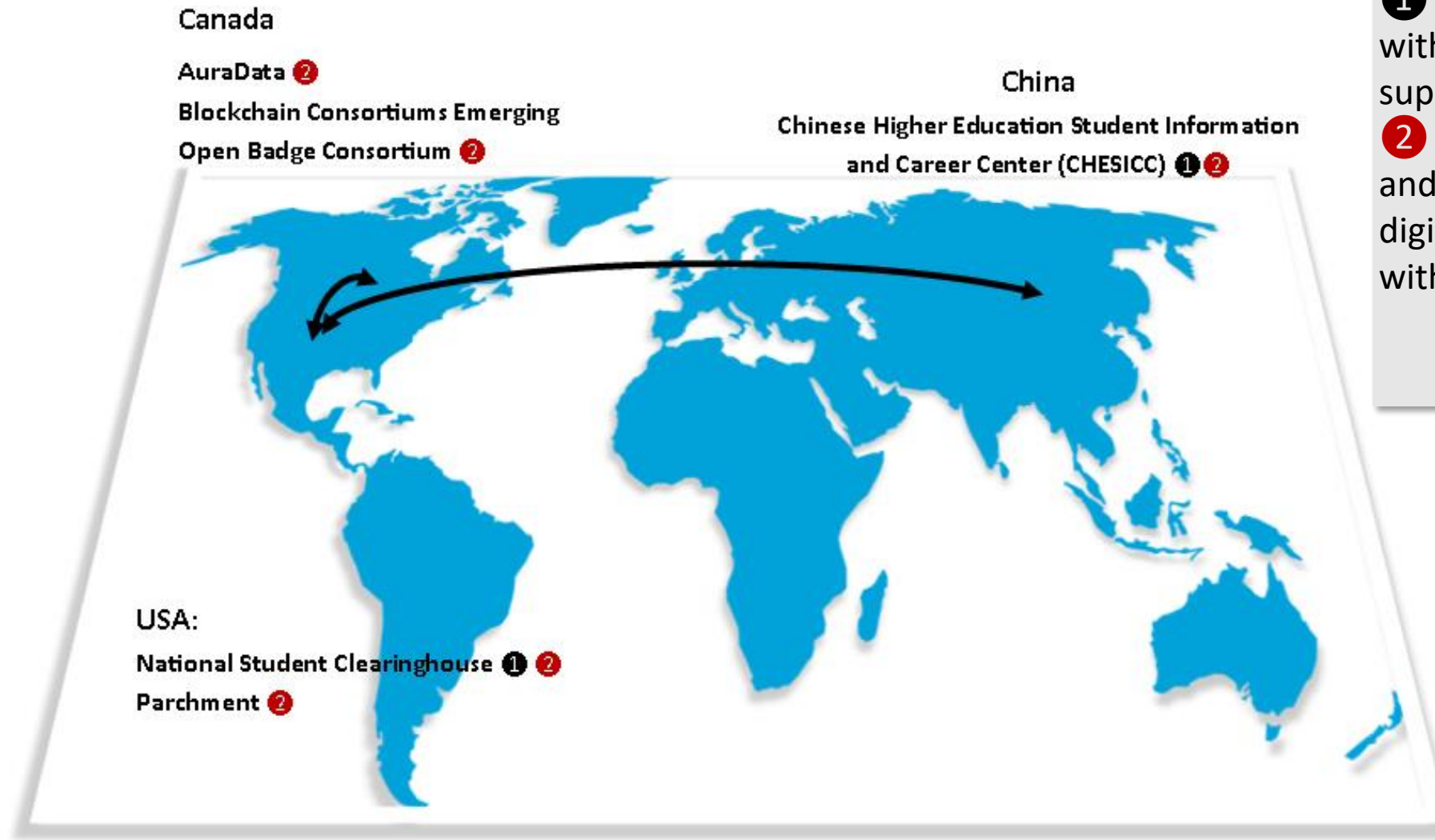
③ Data exchange with data hub or post-secondary institution located in another province (in any capacity)

④ Information resources on higher education pathways, transfer agreements, etc.

⑤ Other support services (e.g., research, transfer policy guidelines, link various government bodies, etc.)

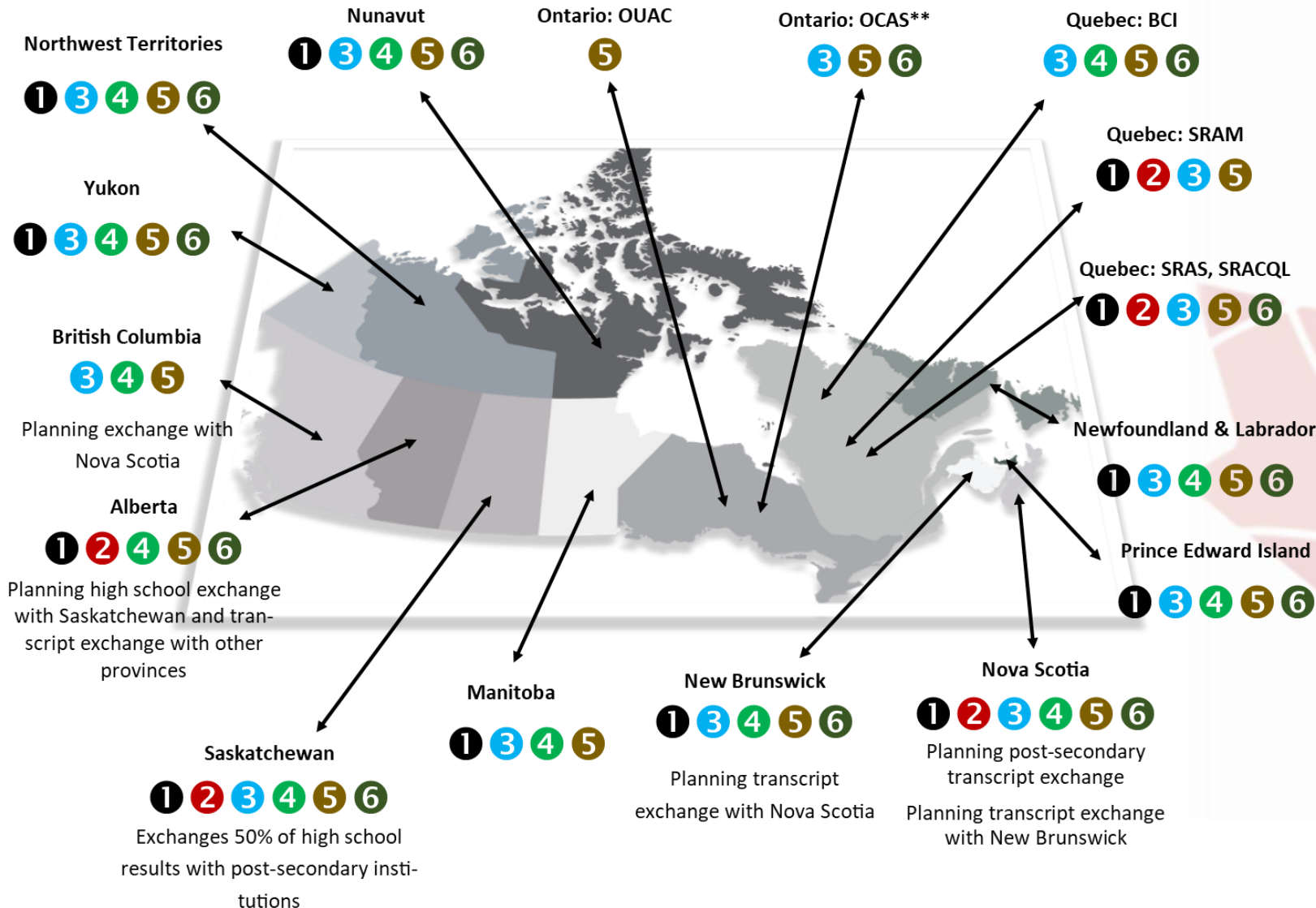
** Full information not available

International Exchange



- ① Data Exchange with institutions to support admissions
- ② Verification and/or sharing of digital credentials with 3rd parties

Post-Secondary Gaps



- 1 No inter-provincial data exchange
- 2 Provides exchange of high school or CEGEP data only
- 3 No graduate student data exchange
- 4 No connection to trusted third parties other than government (e.g., WES, regulatory bodies, etc.)
- 5 No pan-sector, provincial or national exchange/service for **outbound** post-secondary **credential** verification (not incl. apps/transcripts)
- 6 No pan-sector, provincial or national exchange/service for **inbound** post-secondary **credential** verification (e.g., WES)

** Full information not available

** Full information not available

Sources: consultation with organizations, institutional experts, and/or review of organization's publicly available material

Examples of Other Gaps to Close

- Very Limited online credential verification capacities — Existing options are either at the institutional level or through a few 3rd party vendors partnering with institutions (e.g., Parchment, AuraData, National Student Clearinghouse, etc.)
- No international connectivity to global nodes (except McGill exchange with CHESICC via NSC; OUAC capturing LSAT and MCAT scores; as above)
- No member owned provincial or Canada-wide exchange of micro-credentials/badges, co-curricular records, etc. Select vendor options available including the Cdn Open Badge Consortium.
- Initial research into blockchain options (although Cdn govt recently launched a supply chain initiative)

Project Overview

SC Mandate Endorsed by Members (2016)

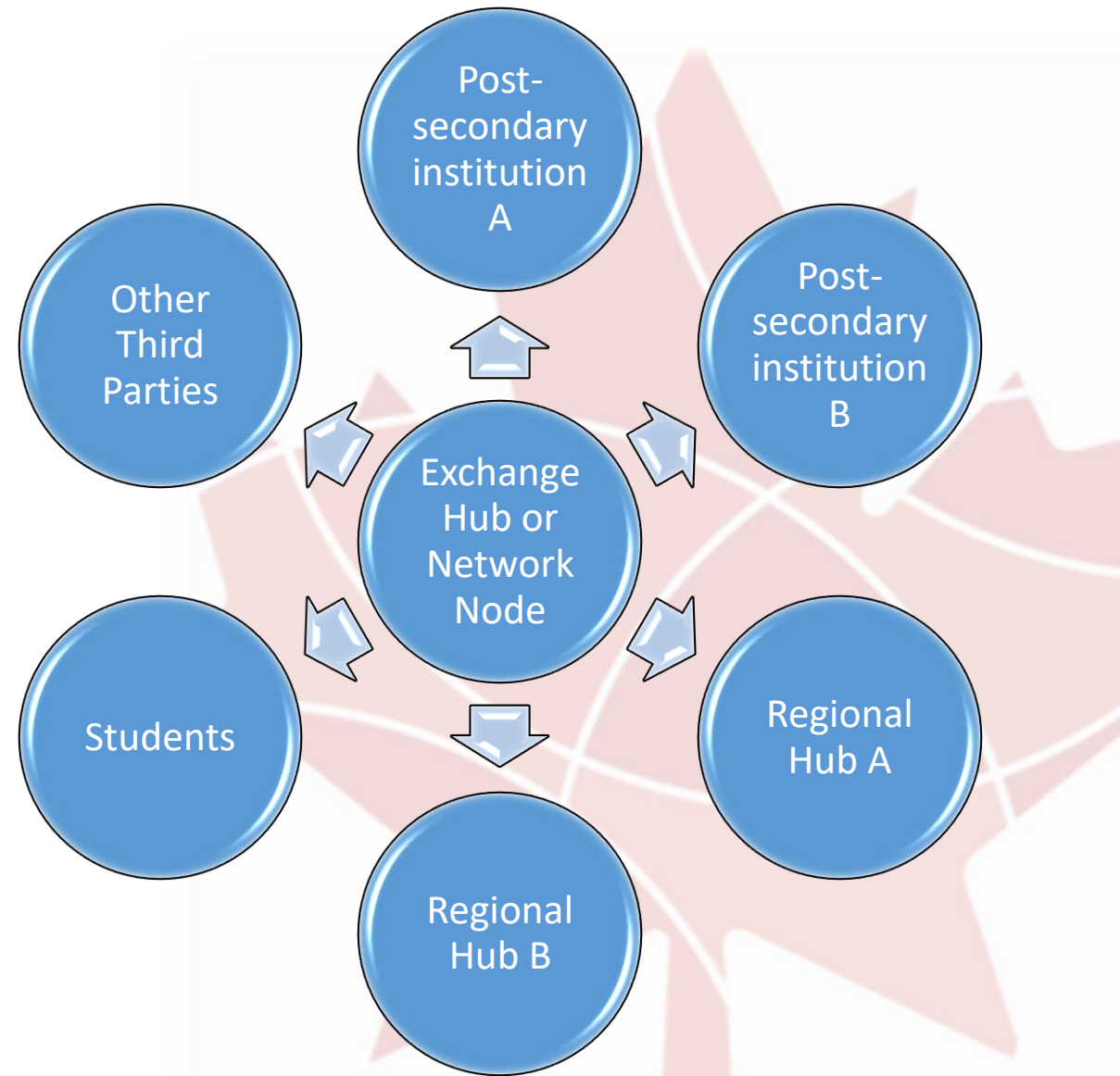
- Continue the **exploration and development** of a Canadian data-exchange model
- Guide the **development** of a Canadian data-exchange model
- **Embed core benefits** into the model - improve student service; improve student mobility through efficient data-sharing; encourage national dialogue around student mobility and success; align with the national and international goals of other Canadian postsecondary and pathway organizations
- With ARUCC leading, **create a governance model** - a national Steering Committee to provide project oversight

The background of the slide features a map of Canada. The northern portion of the map is filled with a dense, grayscale pattern of evergreen trees. The southern portion, representing the provinces, is divided into several colored regions: a dark blue region in the northwest, a light blue region in the west, a dark brown region in the southwest, a light gray region in the center, and a dark gray region in the southeast. The eastern part of the map is faded and less distinct.

Project: Create a
National Solution
for Data Exchange

National Model

- Facilitates trusted connections
- Enables data exchange between two parties
- Provides connection points for trusted international nodes
- Facilitates secure, permission-based sharing of data
- Supports Canada's diversity
- Does not imply creation of an online wallet or portal for students although that could represent a value-added service when sharing student data or credentials with other third parties.



National Coalition



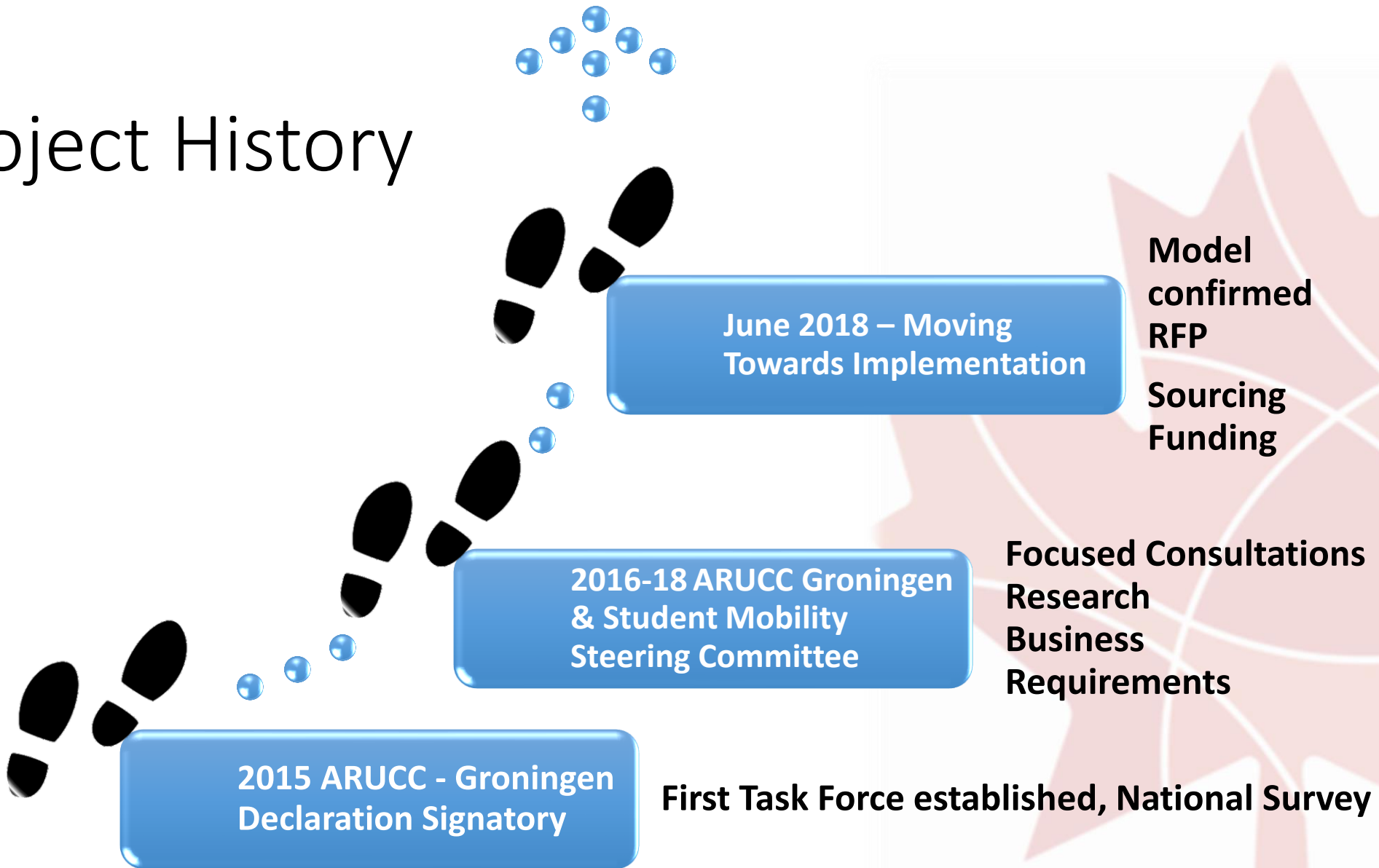
Communication / Collaboration / Innovation



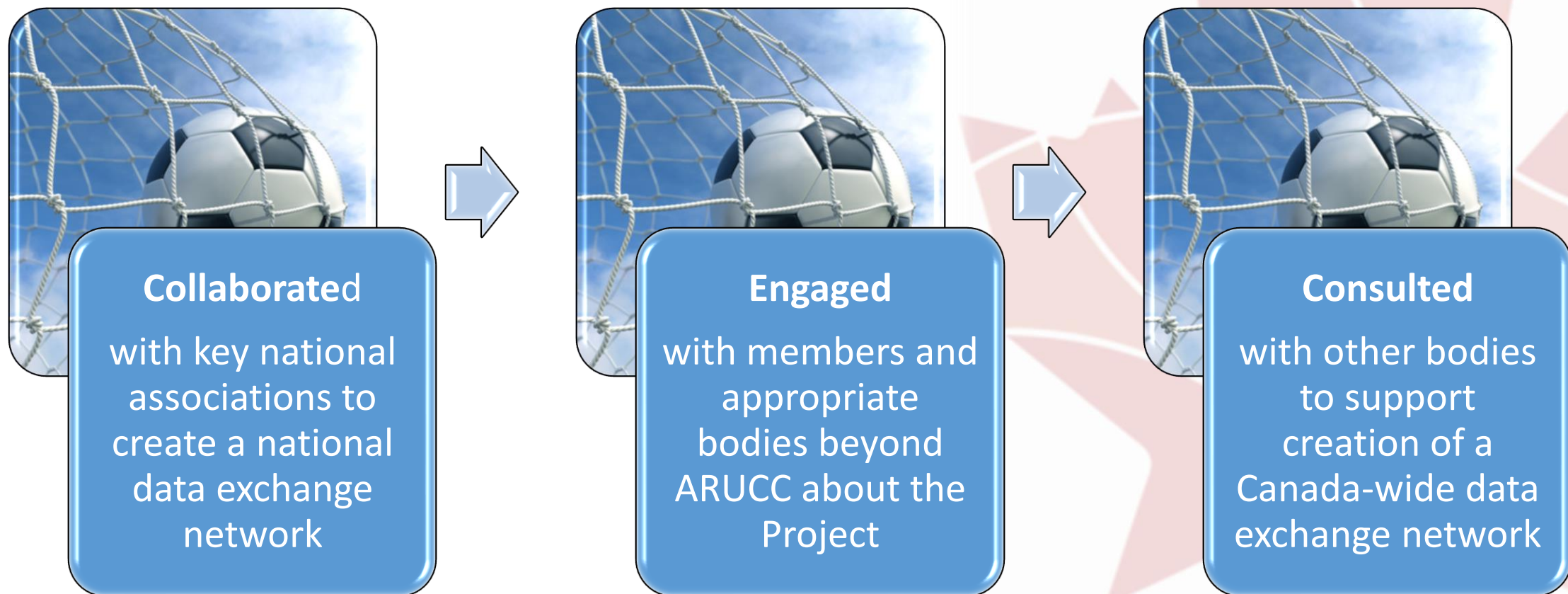
Project Principles

- Improve student service
- Preserve and support institutional and provincial/territorial diversity, autonomy, and authority
- Advance improvements and enhancements that support student mobility and data portability
- Build on and complement existing student application and data exchange hubs supporting postsecondary
- Ensure national, evidence-based solution
- Close gaps

Project History



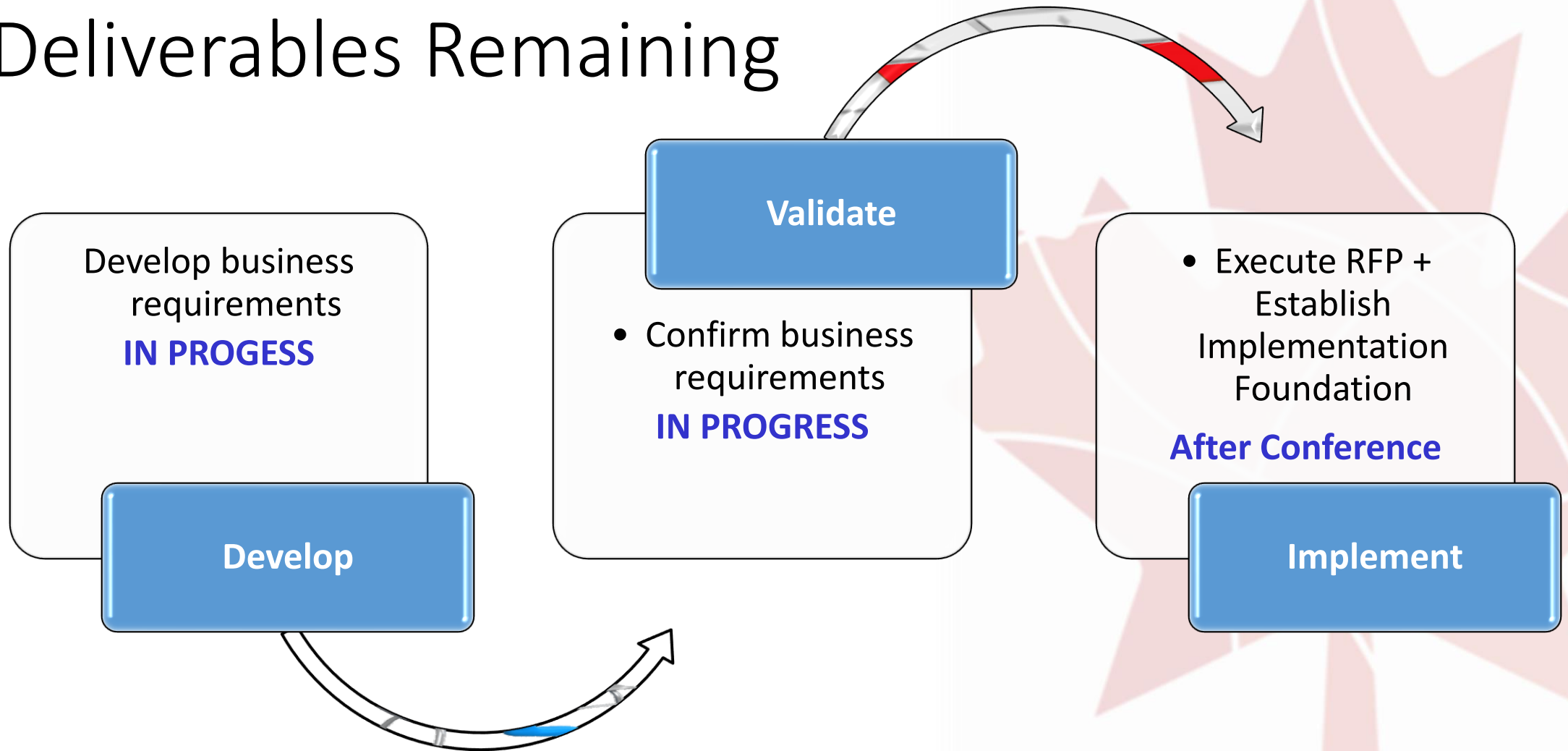
✓ Steering Mandated Deliverables Accomplished



Highlights of Work Completed (April 2017 to Present)

- Resources: hired a project consultant
- Presentations: conducted 500+ registrarial and data exchange experts (provincial, national, international)
- Formal research request: consulted with 1400+ data exchange and student mobility experts through the Groningen Network and at the GDN Meetings
- Direct consultation: engaged 100+ organizations, vendors, government, and people with expertise in national and international data exchange
- Sample Research: Information Request, Web site reviews, presentations, meetings, survey, different models
- Additional Consultation: Ontario and BC Projects, spring session series

Steering Mandated Deliverables Remaining



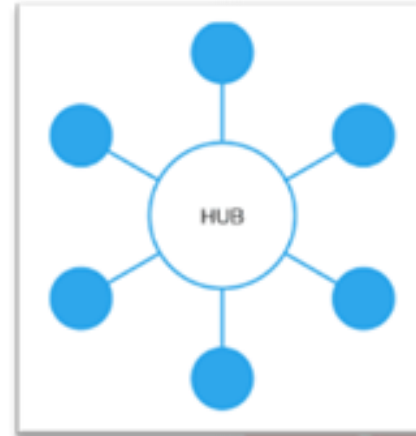
Findings



National Data
Repository



Peer-to-Peer
Network Service
Model



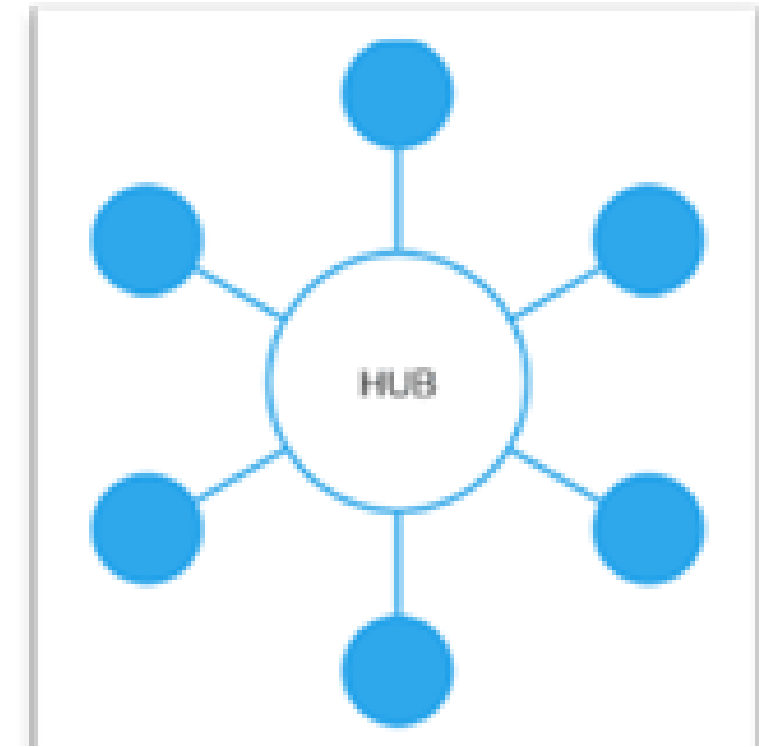
Hub-and-Spoke
Model



Blockchain
Model

Typology of Models

- ❑ Allows connectivity to existing Canadian hubs and post-secondary institutions without hubs
- ❑ Allows institutions to maintain control over their student data repositories
- ❑ Does not require data to be stored in a central repository
- ❑ Facilitates needed infrastructure and environment to connect to trusted international partners
- ❑ Provides the opportunity to create unique service layers to support hubs, institutions, and, potentially students
- ❑ Allows exploration of other forms of distributed access to student data (into the future e.g., blockchain)



Chosen Model

Next Session – Part Two

- Exploring business requirements



Questions or Comments?

For more information

ARUCC Groningen Website <http://arucc.ca/en/resources/task-force-groningen.html>

Sample Communications: Efficient Document Verification

